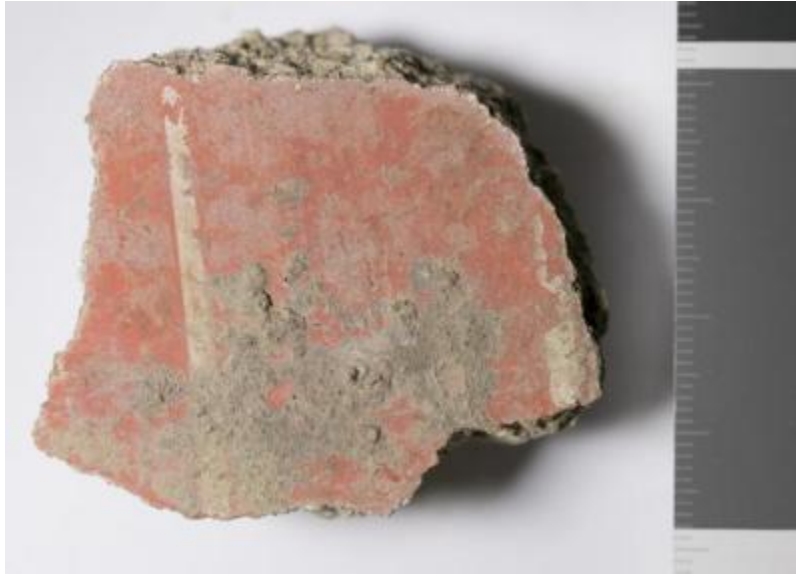


## MRA-ITA-Rom160



**SAMPLE ID:**

MRA-ITA-Rom160

**SAMPLE TYPE:**

Mural painting  
(Sub-Type: fragment)

**DIMENSIONS:**

4.8 cm L x 3.7 cm W x 1.8 cm H

**WEIGHT:**

42.1 g

**GEOGRAPHIC LOCATION:**

<b>Country</b>	<b>Place</b>
Italy	Rome

**SITE/MONUMENT:**

Palatino

**HISTORICAL NOTE ABOUT THE SITE/MONUMENT:**

The Palatine Hill in Rome, rising 51 meters above sea level, is studded with archaeological sites and was a key place in the Roman historical imagination. It was here, the legend said, that the infants Romulus and Remus were rescued and raised by a she-wolf. These miracles were marked in ancient Rome by the construction of a vaulted sanctuary inside the hill itself in remembrance of the mother wolf's den. The Palatine's connection with the first royalty of Rome made it an attractive home for the affluent during the Republican period; Emperor Augustus made his residence on the hill, and part of Nero's Domus Aurea was also located here. Other important archaeological sites on the Palatine include the House of Livia, Temples of Cybele and of Apollo Palatinus, Palace of

Domitian, and the House of Tiberius.

Further reading:

Holloway, R. R. (2014). *The archaeology of early Rome and Latium*. Routledge.

Cerutti, S. M. (1997). The location of the houses of Cicero and Clodius and the Porticus Catuli on the Palatine Hill in Rome. *American Journal of Philology*, 118(3), 417-426.

Claridge, A., Toms, J., & Cubberley, T. (2010). *Rome: an Oxford archaeological guide*. Oxford University Press.

**CHRONOLOGICAL PERIOD (SAMPLE):**

Roman period

**PHOTOS/DOCUMENTS (PROVENANCE):**



View over Rome from the Palatine Hill next to the Ruins of the Imperial Building Complex, by Salomon Corrodi (after 1832)

(<http://thorvaldsensmuseum.dk/en/collections/work/D660/zoom>, public domain)



Palatine Hill seen from the Roman Forum (Lalupa [CC BY-SA 3.0 (<http://creativecommons.org/licenses/by-sa/3.0/>)])  
[https://commons.wikimedia.org/wiki/File:Palatino\\_\(Palatine\\_Hill,\\_Rome\).jpg](https://commons.wikimedia.org/wiki/File:Palatino_(Palatine_Hill,_Rome).jpg)